

British Exhibitors
at
Première Vision
Fabrics

February 2020



UKFT, 3 Queen Square, Bloomsbury, London, WC1N 3AR
Tel: +44 (0) 20 7843 9460. Email: textiles@ukft.org www.ukft.org

British Textiles at Première Vision February 2020

Abraham Moon & Sons	6P16/6R15	www.moons.co.uk
Alex Begg	6R21	www.alex-begg.co.uk
Bella Tela	5N18/5P17	www.bellatela.co.uk
Bennett Silks / Henri Portier	5M19	www.bennett-silks.co.uk
Brisbane Moss Corduroys	6F19	www.brisbanemoss.co.uk
British Millerain	6G15	www.britishmillerain.com
Joseph H Clissold	6P20	www.clissold.co.uk
DBTrend	5H56	www.dbtrend.com
Denholme Velvets	5L9	www.denholme-velvets.co.uk
*Elite Labels	4F46 (Accessories)	shafique@elitelabelsltd.co.uk
Fox Brothers	6R17	www.foxflannel.com
Halley Stevensons	6G19	www.waxedcotton.com
William Halstead	6P14/6R13	www.williamhalstead.co.uk
Henry Bertrand	5H5	www.maisonhenrybertrand.com
Holland & Sherry	6P20	www.hollandandsherry.com
John Foster 1819	6P14/6R13	www.john-foster.co.uk
Joshua Ellis	6P14/6R13	www.joshuaellis.com
Junior Hagen	4F11 (Accessories)	www.junior-hagen.com
Kynoch 1788	6P14/6R13	www.kynoch1788.com
Laurent Garigue	5M26	info@laurentgarigue.com
Liberty Fabrics	5E30/5F27	www.libertylondon.com
Linton Tweeds	5N31	www.lintondirect.co.uk
Litmans Lace and Fabrics	5P10	www.litmansfabrics.com
Lochcarron of Scotland	6R19	www.lochcarron.com
*Master Fashion	5H58	www.masterfashion.co.uk
Neill Johnstone	5N31	www.neilljohnstone.com
*Nigel Preston	3E30 (Leather)	www.nigel-preston.com
*Piñatex® by Ananas Anam	3S38 (Smart Creation)	www.ananas-anam.com
Schwarzschild Ochs London	5E22	www.sochs.co.uk
Stephen Walters & Sons	5L18	www.stephenwalters.co.uk
UKFT	6P18	www.ukff.org
*Weavabel	4C41 (Accessories)	www.weavabel.com
Yorkshire Fur Fabrics	5P57	www.yorkshirefurfabrics.co.uk

British Textiles - spring/summer 2021

Quality and timelessness are the key messages from British mills as they welcome a season of greater eco-responsibility and optimism.

Nature's beauty and diversity continue to inspire textile design through astonishing colour combinations and intricate structures. Attention continues to be focussed on identifying the best ways of utilising resources in the creation of desirable fabrics, from sourcing of raw materials, creation of yarns, clever decisions regarding construction and manufacture, all followed through by innovative ideas around disassembling and regeneration.

SS 2021 takes us on a seasonless voyage that touches on updating core fabric offerings, the use of trans-seasonal fibre blends, relevance of classic luxury yarns and the ever-popular reworking of vintage heritage patterns: the very flexible approach to design and manufacturing for which British mills are world-renowned.

An exciting, energetic season demonstrating new ways of doing things whilst maintaining texture, colour and fantasy. British mills celebrate these sustainable commitments to lower their environmental impact.

Vigour

Fresh spirited and joyful blend of local tradition and artistry for a highly decorative and individualistic look and feel. Fabrics and fashion present a kaleidoscopic take on art and Bohemia to form a new aesthetic, with innovative and modern textile interpretations generating fresh designs ranging from slightly sophisticated to one-of-a-kind customised looks. Exploring the contrast between maximal and minimal, dense and airy or perhaps playing with proportions and blending in time references adds a certain ingenuity and WOW factor. Summer tweeds, colourful stripes, transparent/opaque combinations, lightweights and fringed effects take a bow.

Maverick

A tribute to materials that have withstood the test of time and make contemporary connections to history and values. We are inspired by the past in ways we would probably deem romantic and somehow picturesque, however we take these retro charms and memories and use them as a fuel to push forward new textile frontiers. Simpler times motivate us to strip away the unnecessary and focus on what's real, what's important and what must remain. Fine Panamas, Glenchecks, Prince of Wales, pinstripes and dogstooth checks are some of these beloved British fabrics.

Origin

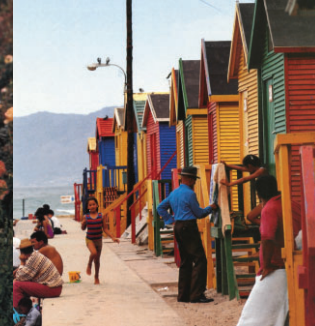
A look that is all about relaxed, unstructured and modest fabrics with a nonchalant attitude. We explore the experimental marriage of nature, science and technology, where a seemingly simple outcome is built on complex technical foundations with a focus on regenerative textiles. There is a feeling for all things raw and natural, gathering the humblest of elements and quietly transforming them into something rare and luxurious or wild and extraordinary. Texture is key and enhanced by layered opacity, slubby surfaces, intermittent transparency and varying yarn thicknesses.

In partnership with:



British trends S/S 2021

vigour



- spontaneous
- cultural references
- folkloric
- vivid energy
- retro tonic
- glamour
- freshness

To see the full British textile and colour trends for spring-summer 2021, please go to www.ukft.org

British trends S/S 2021

maverick



- future heritage
- sentimental
- made to last
- nostalgia
- know-how
- unexpected
- sophisticated

To see the full British textile and colour trends for spring-summer 2021, please go to www.ukft.org

British trends S/S 2021

origin



- sustainable
- neo-artisans
- rustic chic
- essential
- eco-synthetic
- upcycling
- tech



To see the full British textile and colour trends for spring-summer 2021, please go to www.ukft.org

The Campaign for Wool

The Campaign for Wool is a global endeavour initiated by its patron, His Royal Highness The Prince of Wales, in order to raise awareness amongst consumers about the unique, natural and sustainable benefits offered by wool. Encouraging collaboration between an international community of woolgrowers, major fashion designers, retailers, manufacturers, artisans and interior designers, the Campaign has been instrumental in educating consumers about the versatility of wool, and reconnecting them with its myriad of uses – from luxurious fine merino knitwear to fire-retardant insulation for the home.



Since its launch in 2010, The Campaign for Wool has influenced a new demand for wool on an international scale, and its efforts have seen an outstanding threefold increase in the price farmers receive for their wool. In 2016, HRH The Prince of Wales announced the launch of the Dumfries House Declaration, which aims to become the standard bearer of good-practice in the wool industry. This year the Campaign celebrates its 10th Anniversary, highlighting a decade long endeavour to celebrate wool in all its guises.

The Campaign for Wool is delighted to be collaborating with UKFT in promoting British weavers of quality wool fabrics to an international audience at Première Vision.



THE CAMPAIGN FOR WOOL
Patron: HRH The Prince of Wales

Abraham Moon & Sons



Stand 6P16/6R15

Netherfield Mills
Guiseley
Leeds
West Yorkshire
LS20 9PD

T: +44 (0) 1943 873181
E: fabric.sales@moons.co.uk
www.moons.co.uk

Personnel in attendance:

John Pickles – Sales Director
Sarah Powell – Sales Manager
Claire Pearson – Designer

Established in 1837, MOON is renowned for strong heritage combined with innovative use of colour and design. Spring 2021 offers new combinations of lambswool with linen and also cotton and worsted. New stock-supported worsted jacketing designs complement the existing offer.

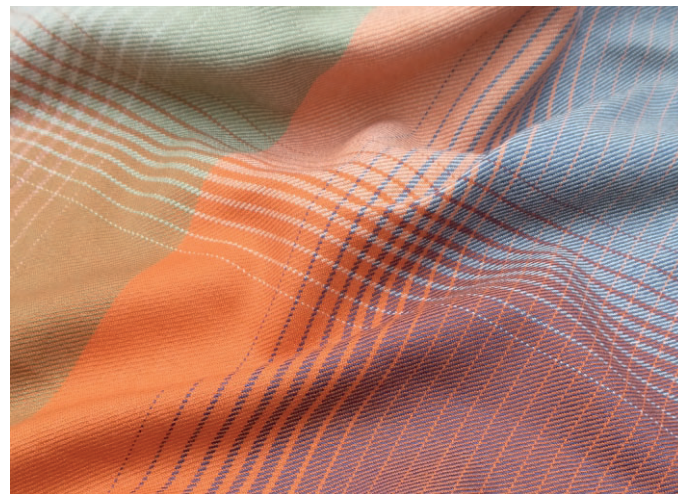
Établi en 1837, MOON est renommé pour son patrimoine fort ainsi que pour l'utilisation novatrice de la couleur et du dessin. Printemps 2021 offre des nouvelles combinaisons de laine d'agneau avec du lin, ainsi que des mélanges de coton et de laine peignée. Des nouveaux dessins pour vestes en laine peignée disponibles en stock complètent l'offre existante.

Agents:

Italy: Riccardo Negrini
E: riccardo@negrinitessile.it
Germany: Mladen Pototschnik
E: m.pototschnik@pototschnik-gmbh.de
Japan: Tadashi Sasaoka
E: mikeueda@mikeueda.co.jp



Alex Begg



Stand 6R21

17 Viewfield Road
Ayr
Scotland
KA8 8HJ

T: +44 (0) 1292 267615
E: enquiries@alex-begg.co.uk
www.alex-begg.co.uk

Personnel in attendance:

Claire McNab – Interim Sales Director
Jemma Wood – Business Development Manager
Luciana Watson – Account Manager

150 years of weaving expertise distilled into an imaginative, diverse collection of exceptional luxury fabrics, for outerwear through to accessories.

Grâce à son savoir-faire, en 150 années d'expériences dans le métier du tissage, Alex Begg a créé une collection imaginative et diversifiée de tissus de luxe exceptionnels, pour les vêtements d'extérieur jusqu'aux accessoires.

Agents:

Japan: Borderless Company Ltd
E: inquiry@borderless-tr.com



Piñatex® by Ananas Anam



Stand 3S38 (Smart Creation)

Somerset House
South Wing
Strand
London
WC2R 1LA

T: +44 (0) 207 7257 9371
E: info@ananas-anam.com
www.ananas-anam.com

Piñatex® is made from pineapple leaves, a by-product of a pre-existing agricultural industry. These by-products would otherwise be discarded or burned: no extra land, water or pesticides are required to produce the leaves that are used to create this textile.

Piñatex® est composé de feuilles d'ananas, un sous-produit d'une industrie agricole préexistante. Ces sous-produits seraient autrement jetés ou brûlés; pas de terre ni d'eau ni de pesticides supplémentaires ne sont nécessaires afin de produire les feuilles qui sont utilisées pour créer ce textile.

Agents:

Spain: Josep Taylor
E: josepm@taylortradingco.eu

Personnel in attendance:

Meliza Mendoza – Sales & Marketing Manager
Ceri Rees – Sales & Marketing Manager

Elite Labels Ltd



Stand 4F46 (Accessories)

21-23 Brunswick Street
Leicester
LE1 2LP

T: +44 (0) 116 251 2634
E: shafique@elitelabelsltd.co.uk
I: @elite_labels UK

Personnel in attendance:

Shafique Hussein – Managing Director
Nuvraj Badyal – Sales & Marketing
Imran Hussein – Sales & Marketing

Elite Labels specialise in exotic appliqués, which are high-end heat transfers that can be easily heat applied. The company uses a variety of techniques including: vinyls, chenille, vegan leather, high build gloss, holographic foils, ribbons and much more.

Elite Labels se spécialisent en appliqués exotiques, ce qui sont des transferts thermiques hauts de gamme qui peuvent être facilement appliqués avec chaleur. L'entreprise se sert d'une variété de techniques y compris: vinyl, chenille, cuir végétal, holographiques, rubans et encore plus.

Fox Brothers & Co Ltd



FOX BROTHERS & CO LTD
WOOLLEN & WORSTED CLOTH MANUFACTURERS SINCE 1772

Makers of the World's Finest Flannel



Illustration by @dheerata

Stand 6R17

Milverton Road
Wellington
Somerset
TA21 0BA

T: +44 (0) 1823 662271
E: rose@foxflannel.com
www.foxflannel.com

Personnel in attendance:
Douglas Cordeaux – MD
Rosemarie Boon – Design
Kristie Reeves - Design

For Spring 2021 we have travelled back into the Fox Archives and across the world for inspiration to create the *Journey collection*, a cloth originally developed for warmer and more humid climates.
‘The perfect cloth for a World Traveller’.

Pour Printemps 2021, nous avons voyagé aux archives de Fox Brothers et à travers le monde pour trouver l'inspiration pour créer la *Journey Collection*: un tissu développé initialement pour les climats plus chauds et humides.
‘Le tissu parfait pour un voyageur du monde.’

Agents:

France: Lafayette Saltiel Drapiers
E: virgil.viret@lafayette-saltiel.com
Japan: S.A.M Inc (Mr Sugure)
E: sugure@officesam.jp
Italy: Pugliese & Moscato
E: lorenzo@pugliesemoscato.it



William Halstead



Stand 6P14/6R13

Stanley Mills
Edward Street
Bradford
West Yorkshire
BD4 9RS

T: +44 (0) 1274 655900
F: +44 (0) 1274 685698
E: sales@williamhalstead.co.uk
www.williamhalstead.co.uk

Personnel in attendance:
Jane Cook – Sales Manager

The William Halstead collection offers a variety of fine worsted fabrics in wool, wool/mohair and blends with silk and linen in an eclectic mix of checks, stripes and semi-plains, in an array of colours from brights to classics.

La collection de William Halstead offre une variété de fins tissus peignés en laine, en laine/mohair ainsi que des mélanges avec soie et lin dans une combinaison éclectique de carreaux, de rayures et de tissus demi-unis, dans un éventail de couleurs vives et classiques.

Agents:

France: Charles Flavell
E: charles.flavell@cfmobil.fr
Italy: Pugliese & Moscato
E: team@pugliesemoscato.it
Germany: Matthias Rollmann
E: matthias.rollmann@telenet.be



Henry Bertrand



Stand 5H5

13-15 Station Road
London
N3 2SB

T: +44 (0) 20 7424 7000
E: sales@henrybertrand.co.uk
www.maisonhenrybertrand.co.uk

Personnel in attendance:

Jamie Morgan – UK Sales Director
Katy Bercovitch – Managing Director
David Burke – Export

A diverse and versatile collection of silk and silk blend fabrics. Henry Bertrand offer both a stock service as well as bespoke weaving from 5m. Range includes Jacquards, brocades and cloques. Suitable for day to eveningwear, cocktail and bridal.

Une collection diverse et polyvalente de soie et de tissus en soie mélangée. Non seulement Henry Bertrand offrent un service de stock, mais ils offrent également le tissage sur mesure à partir de 5m. La gamme inclut les Jacquards, les brocarts et les cloqués. Tous appropriés pour les tenues de journée ou de soirée, les cocktail ou les noces.

Agents:

France: Holland and Sherry - Paris
E: info.couture@hollandandsherry.fr
China: Zentex
E: zentex@aliyun.com
Germany: Voehringer AG
E: info@voehringer-groha.de



Holland & Sherry / Joseph H Clissold



Stand 6P20

9/10 Savile Row
London
W1S 3PF

T: +44 (0) 1721 720101
F: +44 (0) 1721 722309
E: enquiries@hollandandsherry.co.uk
www.hollandandsherry.com

Personnel in attendance:

Lindsay A Taylor – Global Sales Director
Nicolas Guilbaud – Regional Director - UK/Ireland
Franck Urbanczyk – Regional Director

Bouclé, novelty yarns, superfine wools and luxurious natural fibres, including cashmere, silk, alpaca and vicuna have been used to create a collection that encompasses classic, modern and contemporary designed fabrics ideal for the connoisseur of luxury clothing.

Fils fantaisie et bouclés, laines extrafines et fibres naturelles de luxe, y compris le cachemire, la soie, l'alpaga et la vigogne, ont été utilisés afin de créer une collection qui inclut les tissus classiques, modernes et contemporains — idéaux pour les connoisseurs de vêtements de luxe.

Agents:

Italy: Davide Cella
E: dcella@hollandandsherry.it
Middle East, India and Africa: Walid Bathich
E: wbathich@hollandandsherry.ae
USA/Canada: Dougal Munro
E: dmunro@hollandandsherry.com



John Foster 1819



Stand 6P14/6R13

Stanley Mills
Edward Street
Bradford
West Yorkshire
BD4 9RS

T: +44 (0) 1274 655900
F: +44 (0) 1274 685698
E: sales@john-foster.co.uk
www.john-foster.co.uk

Comprehensive stock-supported range from extra-fine Merino cool wool through to the ultimate Super 200's. A diverse collection featuring all-wool contemporary jacketing designs, subtle twist suitings and wool/mohair panamas. Beautiful designs enlivened with checks and interesting accents of colour in a fresh Spring palette.

Une gamme compréhensive disponible en stock, de la laine 'cool wool' de mérinos extrafine jusqu'aux excellents tissus Super 200's. Une collection diverse y compris des dessins pour vestes contemporaines en pure laine, des tissus retors de costume ainsi que des panamas en laine/mohair. Des beaux dessins, animés par les carreaux et par les touches intéressantes de couleur dans une palette fraîche printanière.

Agents:

France: Charles Flavell
E: charles.flavell@cffmobil.fr
Italy: Giovanni Rainoldi
E: giovannirainoldi@icloud.com
Germany: Matthias Rollmann
E: matthias.rollmann@telenet.be



Joshua Ellis & Co Ltd



Stand 6P14/6R13

Grange Valley Road
Grange Road
Batley WF17 6GH

T: +44 (0) 1924 350070
E: genoffice@joshuaellis1767.com
www.joshuaellis1767.com

Classic summer jacketings for the season across plains, semi-plains and plaids, in 100% cashmere, silk/cashmere & 100% superfine camelhair. Colours range from soft, timeless neutrals to clear pastels and fresh brights in clean finishes, with weights from 240-320grm.

Tissus de vestes d'été classiques pour la saison y compris des tissus unis, tissus demi-unis, et dessins écossais, en pur cachemire, en soie/cachemire et en 100% poil de chameau extrafin. Les couleurs varient des couleurs neutres, douces et intemporelles jusqu'aux pastels clairs et coloris vifs très frais, avec poids allant de 240 à 320 grammes.

Agents:

Japan: Chicks Corporation
E: chicks@amy.hi-ho.ne.jp
Korea: Q2 I.B.N. Co Ltd
E: q2kim@unitel.co.kr
Italy: Pugliese & Moscato
E: team@pugliesemoscato.it
France: Charles Flavell CFF
E: charles.flavell@cffmobil.fr
Germany: Matthias Rollmann
E: matthias.rollmann@telenet.be



Kynoch 1788



Stand 6P14/6R13

Waterside Mill
Langholm
Scotland
DG13 0DG

Personnel in attendance:
David Gallimore – Sales
Claire Carey – Sales

T: +44 (0) 13873 80311
E: office@kynoch1788.com
www.kynoch1788.com

Wool/silk/linen jacketings in a range of herringbone and check designs. Wool/cotton/cashmere blends, slubby cotton/silk/linen Donegal and plain-weave tweeds, oversized houndstooth, fancy fabrics in a mock leno structure and wool twist suitings.

Tissus de veste en laine/soie/lin dans une gamme de dessins à chevrons à carreaux. Des mélanges en laine/coton/cachemire, des tweeds Donegal en coton/soie/lin à l'aspect irrégulier ainsi que des tissus unis, des grands pieds-de-poule, des tissus fantaisie en structure 'leno' ainsi que des tissus retors de costume en laine.

Agents:

France: Charles Flavell
E: charles.flavell@cffmobil.fr
Italy: Pugliese & Moscato
E: team@pugliesemoscato.it
Germany: Matthias Rollmann
E: matthias.rollmann@telenet.be



Linton Tweeds



Stand 5N31

Shaddon Mills
Shaddongate
Carlisle
Cumbria
CA2 5TZ

Personnel in attendance:
Duncan Walker – Business Development Director
Ross Walker – Linton Direct Manager
Irene Steele – Head Designer

T: +44 (0) 1228 527569
E: sales@lintontweeds.co.uk
www.lintondirect.co.uk

A collection of innovative fantasy tweed fabrics, incorporating fancy structures and yarns, with contemporary appeal and a riot of colours and textures.

Une collection de tweeds fantaisie très innovants, y compris des structures et des fils sophistiqués, avec attrait contemporain. Une explosion de couleurs et de textures.

Agents:

Japan: T. Uchinuma
E: info@uchinuma.jp
Korea: KD Corporation
E: admin@kdcorporation.co.kr
China: Run Unison International
E: assistant03@rununison.com



Lochcarron of Scotland



Stand 6R19

Waverley Mill
Rogers Road
Selkirk
Scottish Borders
TD7 5DX

T: +44 (0) 1750 726000
F: +44 (0) 1750 724100
E: design@lochcarron.com
www.lochcarron.com

Luxurious checks and authentic tartans coloured up in classic wools and contemporary blends in a variety of weights and finishes.

Carreaux de luxe et tissus écossais authentiques colorés en laines classiques et mélanges contemporains dans une variété de poids et de finitions.

Agents:

France: Sylvie Gueron
E: sylviegueron@gmail.com
Italy: Riccardo Bises
T: +39 335 5621 923
E: riccardo_bises@hotmail.com
Japan: Mike Tsunashima
E: info@uteco.co.jp



Master Fashion



Stand 5H58

2 Gospatrick Road
London
N17 7EE

T: +44 (0) 7955 592983
E: info@masterfashion.co.uk
www.masterfashion.co.uk

Personnel in attendance:
Chanjuan Zhou – Chief Designer
Hong Zheng – Sales Director

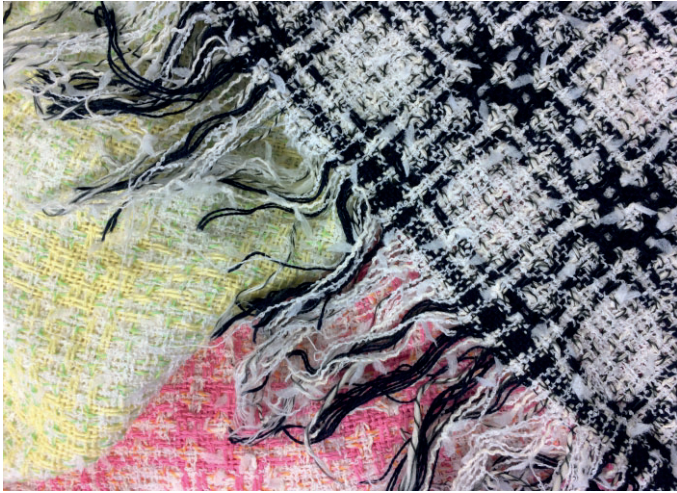
Design talent and expertise from London. Leading consultancy in style, colour, pattern, textile and brand development. Trend research and forecast obtaining worldwide influence. Trend books for Womenswear/Menswear/Kidswear/Textile Patterns.

Savoir-faire et talent créatif provenant de Londres. Cabinet-conseil éminent dans les domaines de style, de couleur, de dessin, de textile et du développement de marque. Recherches et prévisions de tendances avec influence mondiale. Livres de tendances pour la mode pour les femmes/les hommes/les enfants ainsi que pour les dessins textiles.

Agents:

China: China Textile Information Center
E: songtao@ctic.org.cn
Italy: Dip & Dye snc Fashion Trend Books
E: andrea@dipdye.it
Korea: Wooricom Inc
E: wooril3321@gmail.com
India: Honesty Subscription Agency
E: honesty@vsnl.com

Neill Johnstone



Stand 5N31

Westwood Nurseries - Unit 16
Orton Grange
Carlisle
CA5 6LB

T: +44 (0) 1228 712358
E: office@neilljohnstone.com
www.neilljohnstone.com

Personnel in attendance:
Lilian Allan – Designer

A colourful range of cotton-based tweeds in a mix of lively textures. New for this season are fabrics containing fancy yarns made from recycled components and certified organic cottons.

Une gamme colorée de tweeds à base de coton avec des textures vivantes. Nouveautés cette saison sont des tissus composés de fils fantaisie à base de composants recyclés et de cotons organiques certifiés.

Agents:

Japan: T. Uchinuma
E: info@uchinuma.jp
Korea: K D Corporation
E: kdcorp529@naver.com
China: Run Unison International
E: assistant03@rununison.com



Contract Design Studio Ltd t/a Nigel Preston



Stand 3E30 (Leather)

31 Cassland Road
London
E9 7AL

T: +44 (0) 7725 798809
E: info@nigelpreston.com
www.nigel-preston.com

Personnel in attendance:
Brenda Knight – Designer & Managing Director
Vikas Jain – Manufacturing Director

Heritage brand and internationally renowned luxury designer with 45 years' experience selling to high fashion luxury market. The company works with retailers and Private Label and have their own exclusive factory, working with highest quality European materials and are renowned for their artisan finishes and decorative, painted, block prints. Specialists also in embroideries and embellishments on sheepskin, leather and fabric garments.

Marque établie et créateur de mode de luxe reconnu au niveau international avec 45 ans d'expérience dans la haute couture. L'entreprise travaille en direct avec les détaillants et aussi avec les marques privées et ils ont leur propre usine exclusive où ils travaillent avec les tissus européens de la plus haute qualité. Ils sont connus pour leurs finitions artisanales et leurs dessins peints décoratifs et la xylographie. Egalement spécialisés en l'embellissement et la broderie sur vêtements en peau de mouton, en cuir et textiles.

Agents:

Japan: Ken Takao
E: ken_circulation@ybb.ne.jp



Stephen Walters & Sons



Stand 5L18

Sudbury Silk Mills
Sudbury
Suffolk
CO10 2XB

T: +44 (0) 1787 372266
E: sales@stephenwalters.co.uk
www.stephenwalters.co.uk

2020 marks the 300-year anniversary of the family-run business Stephen Walters, who are delighted to launch their new collection of truly distinctive designs. The collection is inspired by their rich heritage, drawing on the extensive archive and artisan traditions which blend uniquely with contemporary design and advanced technical capabilities.

2020 marque le 300e anniversaire de l'entreprise de famille Stephen Walters, qui sont ravis de lancer leur nouvelle collection de dessins vraiment distinctifs. La collection est inspirée par leur patrimoine riche, en faisant appel aux archives approfondies et aux traditions artisanales qui se mélangent de façon unique avec design contemporain et capacités techniques avancées.

Agents:

Italy: Pugliese & Moscato
E: team@pugliesemoscato.it
USA: Soldat Textiles Agency
E: esoldat@peoplepc.com
Japan: Muramatsu & Co
E: kuroki@muramatsu-shoji.jp

Personnel in attendance:

Ceri Yates – Director of Sales
Rebecca Starkey – Account Manager
Hollie Ambrose – Key Account Manager

Weavabel



Stand 4C41 (Accessories)

3 Focus Way
Focus Business Park
Yeadon
Leeds
LS19 7DB

T: +44 (0) 113 239 1122
E: sales@weavabel.com
www.weavabel.com

Personnel in attendance:

Daniel Stutterheim – Europe Sales Manager

To support the drive for a more sustainable future, Weavabel are launching their new eco range with premium qualities and finishes yet using sustainable materials. Their range includes bamboo, straw, stone, grass and FSC papers along with post-consumer recycled labels, tapes and packaging. Weavabel have 4 sustainable alternatives to plastic labels and have Oeko-Tex certified metals with eco-friendly coating, recycled leathers and biodegradable seals and packaging.

Afin de soutenir la volonté d'un futur plus durable, Weavabel lancent leur nouvelle gamme écologique avec des qualités et des finitions hautes de gamme, mais tout en utilisant les matières durables. Leur collection comprend le bambou, la paille, la pierre, l'herbe ainsi qu'étiquettes, rubans et emballage recyclés. Weavabel offrent 4 choix alternatifs durables aux étiquettes en plastique et utilisent également les métaux certifiés 'Oeko-Tex' avec vernis écologique, cuirs recyclés et emballage biodégradables.

Agents:

UK: Daniel Stutterheim
E: Daniel@weavabel.com
UK: Fraser Tennent
E: Fraser@weavabel.com
UK: Paul Hartley
E: Paul@weavabel.com

The UK group at Première Vision is coordinated by UKFT (the UK Fashion and Textile Association) and supported by the Department for International Trade with the generous support of The Clothworkers' Company and The Campaign for Wool



In partnership with:





In partnership with:

